



EXPERIENCES FOR CHILDREN

NOT ONLY



Dear guests of the Pojizeří and Polabí tourist region,

we would like to offer you a few tips for a trip to the countryside, where you can comfortably get by train, car or bicycle. On the back of our leaflet, you will find a list of tourist Information Centres in our region, which will be happy to provide you with advice on the details of your chosen trip and also accommodation.

The team of Pojizeří a Polabí would like to wish you a wonderful time full of amazing experiences.



Pojizeří a Polabí, NPO

A Komenského náměstí 61 / 293 01 Mladá Boleslav I

E info@poapo.cz / T +420 602 282 561

1

The Secret of the Zvířetice Vault

→ www.zviretice.cz/en

The legendary quest for Countess Eleonora's treasure in the stunning setting of the Zvířetice ruins is staged annually from spring to autumn. Follow the secret code and bring back beautiful treasures from the vault.

2

The Metal Trail through Mladá Boleslav

→ www.metalovacesta.cz/en

The short route for children has 7 stops with info panels in which ŠKODA car called Vojta has narrated the records for children. You can receive a map and a competition brochure full of puzzles and tasks at the Info Centre in Mladá Boleslav.

3

ŠKODA Museum

→ museum.skoda-auto.com

The museum is located in former production halls where cars were manufactured until 1928. In addition to the polished exhibits, children aged 12 and up can discover the world of virtual reality. The younger ones can enjoy a touchscreen, coloring sheets, and a ride around the museum on a ŠKODA push car.

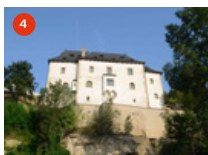
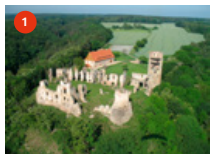


4

Templ Municipal Palace

→ kulturamb.cz/cs/mestsky-palac-templ

You can find a multimedia museum exposition in the aristocratic palace in Mladá Boleslav which was built in the late Gothic style. It features regular gallery exhibitions and experimental archaeology programs for schools and families. There is also an interactive archaeological playground for children at the outer bailey of the palace.



5

Zahrada Ecocentre

→ mb-eko.cz

Enjoy more than 60 species of domestic, wild or exotic animals and plants from the subtropics and tropics in the outdoor aviaries and inside the miniZOO greenhouses. The site also houses a rescue station for injured and handicapped birds of prey and owls.

6

Regional Museum of Mladá Boleslav

→ www.muzeummb.cz/en

In addition to the permanent exhibitions and short exhibitions, you can also visit the museum playroom at Mladá Boleslav Castle. Here you can test your three-dimensional imagination and use the touch screen which will show you many interesting facts about the exhibits.



7

Metod Vlach Aviation Museum

→ letecke-muzeum-metodeje-vlacha.cz

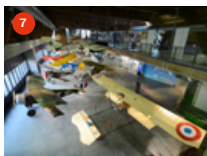
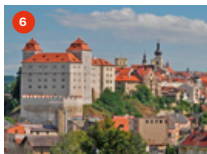
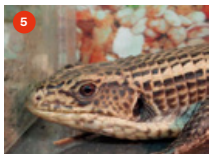
Besides the functional aircraft exhibits, often seen in operation during “We Fly For You” events, the museum also houses rescue inflatable slide, flight simulators, and pedal planes in the Aviation Café.

8

Outdoor Swimming Pool Complex Mladá Boleslav

→ saramb.cz/koupaliste-mlada-boleslav

The paddling pool, children's pool, whirlpool, water slide, diving board, water attractions, thermal pool and much more can be found in the swimming pool area, which can be divided into four parts: water world, children's and sports playground, sandy beach with inflatable trampoline and refreshments. The water areas are permanently heated and the water temperature is 26 °C.



9

“Follow the Squirrels” Educational Trail

A short walk around the Štěpánka Forest Park in Mladá Boleslav will guide children to ten stops where they will learn in a fun and playful way about the life of squirrels and other forest inhabitants, and about trees, berries, mushrooms, and medicinal herbs.

10

Chlum Educational Trail

The 7.5 km long path has ten information panels divided into the natural history and archaeological parts. It is complemented by eight interactive elements for children or a panoramic view of the landscape dominants of the Mladá Boleslav region. Currently, the panels are written only in Czech.



11

Baba and Dědek Hills Educational Trail

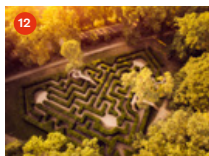
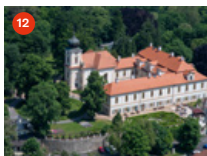
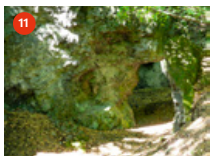
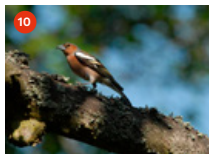
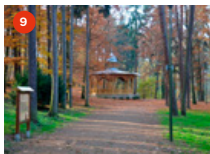
The tour starts and ends in Horní Stakory and is a 2.5 km long walk and takes the visitor through the landscape of an erupted volcano, rock portals, and mysterious caves. You can also admire the diverse fauna and flora along the trail.

12

The Princess and the Maze at the Loučeň Castle

→ www.zamekloucen.cz/en

Children can enjoy these sightseeing tours with Princess Mary or Princess Caroline. Find out what life was like at the Château and what toys the children of the aristocracy used to play with back in the day. Twelve exciting labyrinths and mazes await everyone in the park.



13

Crafts and Herbs at Botanicus in Ostrá

→ botanicus.cz/en

Children can make soap, rope, and candles at this medieval craft center. You will also find basket makers, blacksmiths, and archers here. And during the weekends you can enjoy many juggling, music, and theatre performances.

14

Have fun at the Zoo Chleby

→ zoochleby.cz

The family zoo offers adventure programs and during August you will be able to spend the night here. In addition to lots of interesting animals, the zoo also has a large playground, a photo corner, a children's corner, and an exhibition of excrement.

15

Adventure at the Mirakulum Park in Milovice

→ mirakulum.cz/en

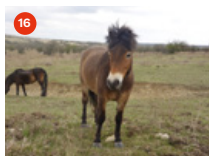
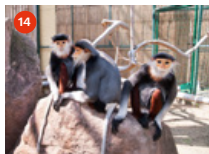
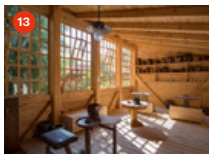
You will find a contact zoo, great play facilities – eight high towers, a castle full of climbing structures with a mysterious underground, a railway, water slides, a water world, and refreshments, as well as BBQ facilities in this amusement park.

16

European bison, horses, and aurochsen are within your reach

→ ceska-krajina.cz

Get an opportunity to a closer acquaintance with the original large ungulates in two pasture reserves near Milovice and Benátky nad Jizerou. Aurochsen, wild horses, and even the timid European bison will be at your fingertips.



17

Nelly, the Princess of Château Mcely

→ chateaumcely.cz/en

All the way from the elegantly furnished suite through the princess feast and pampering in the spa, to the gift collection – you and your children will enjoy this unique atmosphere at this luxurious hotel.

18

Romanka Lookout Tower

→ hruby-jesenik.cz/rozhledna-romanka

The lookout tower at Hrubý Jeseník is named after a little girl Romanka, who won the hearts of the builders during its construction. 116 steps will lead you to the viewing point. In clear weather, you will be able to see the Giant Mountains or the so-called Krkonoše Mountains and the Ještěd mountain.



19

The beauty of the countryside at the Open-air Folk Museum in Přerov nad Labem

→ polabskemuzeum.cz

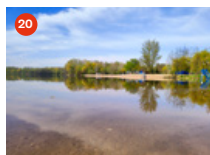
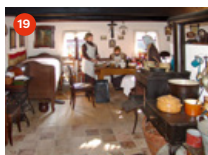
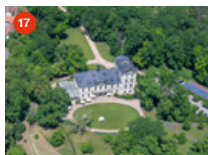
The picturesque open-air museum offers nine cottages, a school, seven granaries, four barns, and a chapel. Furnished interiors represent life in a village in the Elbe region from the mid-18th to the mid-20th century.

20

Jezero Lake in Poděbrady

→ koupalistejezero.cz

The Jezero lake is a great attraction for everyone! You can have great fun at a sandy beach, slides, miniature golf, and boat and pedal boat rentals here. Older children can also use the beach and foot volleyball courts. And for your refreshment, there is also a snack menu at the restaurant.



21

Huslík Ecocentre

→ ekocentrumhuslik.cz

In the middle of the riparian forest near the confluence of the Elbe and Cidlina rivers at the former gamekeeper's lodge at Huslík, you will find the base of the animal rescue station, an eco-center surrounded by a 10-hectare natural site. Animal displays, game components, educational activities, and a beautiful natural complex – that's what Huslík is all about.

22

“Živá Zahrada” Educational Trail

Along the “Živá Zahrada” or if translated “Living Garden” Trail, you'll learn what creatures live in our gardens. What makes an earwig useful? How much does a tit eat? And a whole lot more!



23

“Our and Klicpera's Polabí” Educational Trail

A gamekeeper called Klicpera, who used to live in a gamekeeper's lodge at Huslík, knew the local surroundings like the back of his hand. Why don't you take a closer look with Klicpera into what our landscape used to look like and what would benefit the present one? Discover meadows, ponds, or beautiful orchards, and animal enclosures.

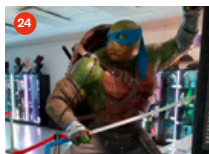
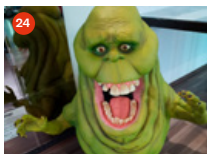
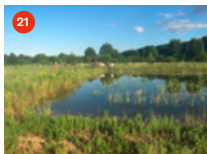
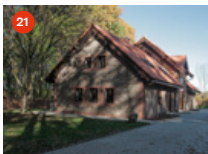


24

Film Legends Museum in Poděbrady

→ filmlegendsmuseum.com

Come to find out if your favourite movie hero is in our museum. We'll reveal that Harry Potter is already here, waiting for you. And not only him, but also characters from Avatar, Spider-Man, Iron Man, The Incredible Hulk, Thor, and Captain America.



25

LEGO Museum in Poděbrady

→ vstupenky.muzeumlega.cz/en/muzeum-podebrady

Who wouldn't know LEGO building kits with small colored blocks of different shapes? The museum will reveal what can be built out of them. And you may end up not only by watching. The children's corner offers a great chance to go back to your childhood and build something unique by yourself. The museum displays over 3,000 different LEGO models.

26

Sightseeing Train

→ vyhlidkovyvlacek-podebrady.cz

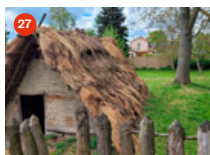
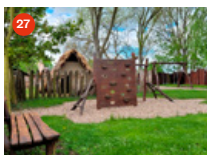
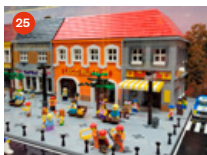
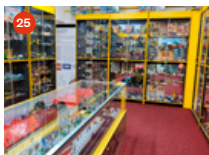
The excursion by sightseeing train leads us along the river to the confluence of the Elbe and Cidlina rivers. You can have something to eat or have a drink at the confluence and then walk back to the town center along the river. Those who want to save their energy can also take the train back. The starting points are at the lock chamber Zdyadlo and at the confluence.

27

Celtic Museum and a Educational Trail

→ obec-dobsice.cz

You are welcome at the museum every day, just kindly call in advance. Children can watch an engaging film about Celtic life and explore the local exhibition in our museum. It is also possible to go from the museum via the educational trail that leads along the distributary of the Cidlina River to the Celtic burial grounds. A playground in the form of a Celtic oppidum with a replica of a pit house is a very exciting place on the way.



QUIZ



← What is the name of one of the exhibits in the ŠKODA Museum?

→ How many painted hearts can you find in the Poděbrady Château courtyard?



← How many labyrinths and mazes do they have in the gardens of Loučeň Castle?

→ Which museum can you find at the castle in Mladá Boleslav?



← In which city you can find Mirakulum Park?

→ Which city can you observe from the tower of the Gothic church of St. Giles?



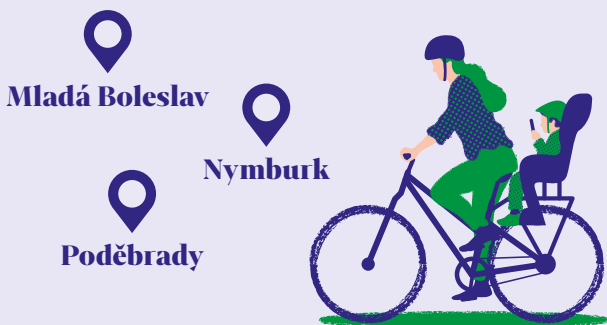
← What is the name of the most beautiful and rare monkeys kept in Chleby Zoo?

↓ ANSWERS HERE

Škoda 110R / 28 / 12 / Regional Museum of Mladá Boleslav / Milovice / Nymburk / Red-shanked douc

**Set off together with
your personal guide.**

**Why limit yourself to
programs of the usual tours?**



**From tourist to the explorer
in one click with the
SmartGuide app.**

No need to stick to the usual tours,
or to be bound by other people's schedules.

Get your own personal, high-quality pocket guide
that offers up-to-date information and draws on
the knowledge of local experts.

It's like having a friend with you
taking you off the main tourist trails.

**Get the app
SmartGuide
for your phones**



Tourist Information Centres (TIC) in Pojizeří and Polabí region

- 1 TIC Mladá Boleslav**
 Železná 107
 293 01 Mladá Boleslav
 T +420 326 109 402
 E infocentrum@kulturamb.cz
- 2 TIC Nymburk**
 Nám. Přemyslovců 165
 288 02 Nymburk
 T +420 325 501 104
 E infocentrum@meu-nbk.cz
- 3 TIC Poděbrady**
 Jiřího nám. 19
 290 01 Poděbrady
- 4 IS Benátky nad Jizerou**
 Zámek 50
 294 71 Benátky n/Jizerou
 T +420 736 235 436
 E infocentrum@benatky.cz
- 5 TIC Dobrovická muzea**
 Palackého nám. 2
 294 41 Dobruška
 T +420 725 871 072
 E mu.recepce@tereos.com
- 6 IC Zámek Loučeň**
 Loučeň 1
 289 37 Loučeň
 T +420 727 900 616
 E infocentrum@zamekloucen.cz
- 7 TIC Lysá nad Labem**
 Husovo nám. 23
 289 22 Lysá n/Labem
 T +420 601 323 046
 E ticlysanadlabem@polabi.com
- 8 TIC Milovice**
 Nám. 30. června 508
 289 23 Milovice
 T +420 325 517 110
 E tic@mesto-milovice.cz
- 9 TIC Sadská**
 Palackého nám. 257
 289 12 Sadská
 T +420 325 594 329
 E kic.sadska@email.cz
- 10 TIC Zvířetice**
 Podhradí 14
 294 01 Bakov n/Jizerou
 T +420 326 210 230
 E info@zviretice.cz

Publisher Pojizeří a Polabí, NPO / ID 08389349 / **Publication** first (2023)
Edition of 2 000 pcs / **Print** fronte Ltd. / **Photographs** from the archive of
 Pojizeří a Polabí, NPO / **Front page photo** src: archive of SCCR, Lukáš Sochor
Graphic design Pavel Ševčík (www.purple.cz) / **Translation** Jana Mentbergerová